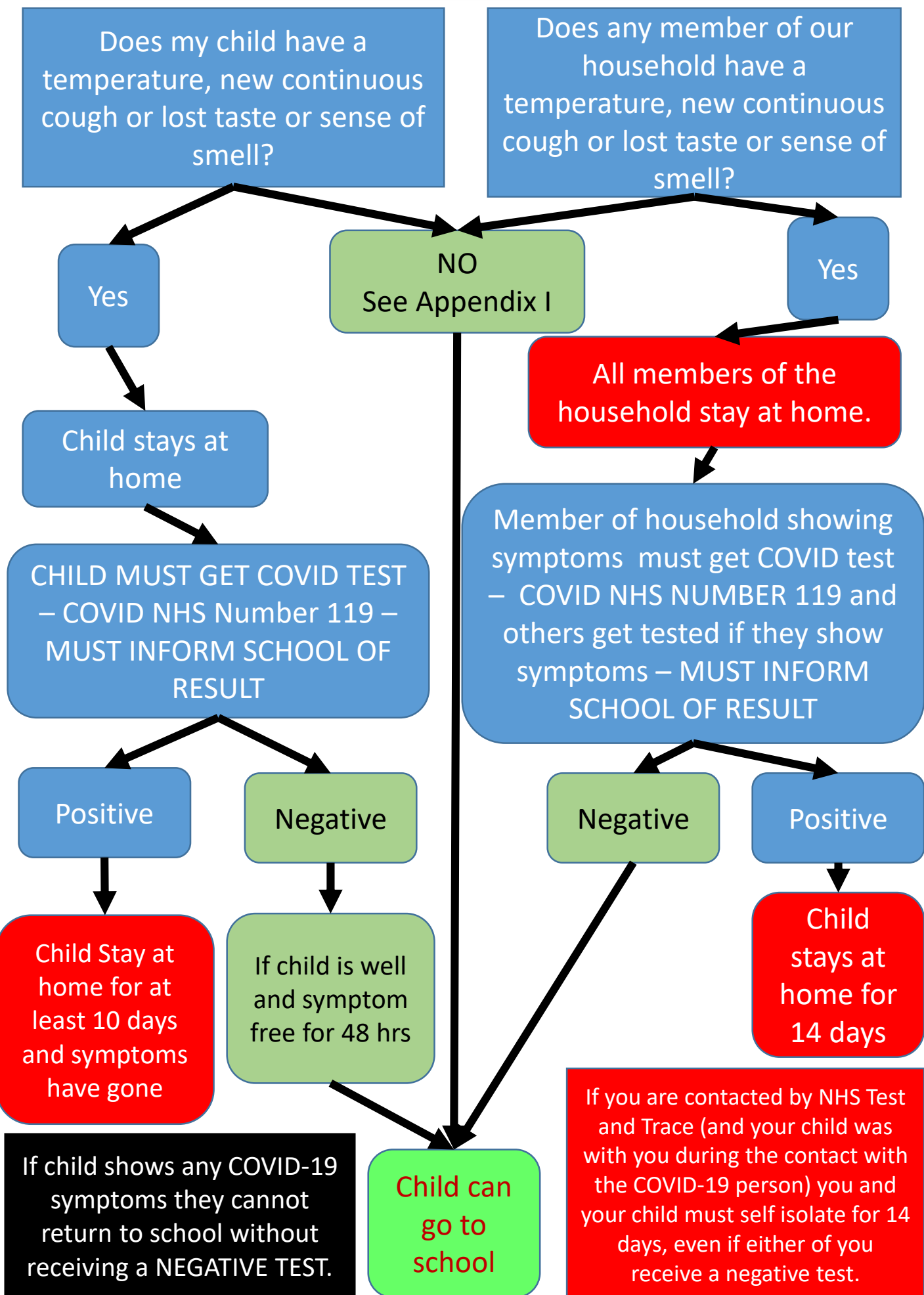


# COVID SYMPTOMS AT HOME FLOW CHART



# ACTIONS IF CHILD SHOWS COVID-19 SYMPTOMS AT SCHOOL

CHILD HAS TEMPERATURE, DEVELOPS NEW CONTINUOUS COUGH or LOSES SENSE OF TASTE OR SMELL

CHILD

STAFF

REMOVED FROM CLASSROOM IMMEDIATELY  
(Other children stopped from passing if possible)

Staff Member from classroom / year group put on Full PPE: mask, visor, apron and gloves

PPE Staff Member and Child move to ISOLATION BAY as determined in Risk Assessment in (avoiding other staff and children)

Child stays in ISOLATION BAY

PPE Staff Member takes temperature  
Inform office staff if over 37.8 degrees.  
Member of staff stays with child

PPE Staff Member informs the HT/SLT of the temperature and office staff ring parents to request IMMEDIATE pick up and request parents to organise a COVID test.  
Parent to wait in Reception

Member of office staff gets siblings and child's personal item.

PPE Member of staff take child to Reception and reminds parent to get a COVID-19 test and that they must inform school of the result and that the family must isolate until result is received.

PPE Member of staff closes ISOLATION BAY AND ADDS CLOSED SIGN. They REMOVE PPE AND PLACES IN YELLOW BIN and wash hands thoroughly and return to class

CLEANERS CLEAN ISOLATION BAY WITH MILTON / BLEACH WEARING FULL PPE and CLOSED SIGN REMOVED

## APPENDIX I

Is the child unwell?

If they **do not have** any of the 3 main Covid-19 symptoms:

- new continuous cough
- fever (a temperature of 37.8°C or higher)
- loss of, or change in, normal sense of taste or smell (anosmia)

then the child should be treated as normal in the family home and no test is required.

Other childhood illnesses are still prevalent such as cold, diarrhoea and vomiting, sore throats etc.

Children must only be tested if they display one of the 3 symptoms listed above.

**Remember: If Covid-19 is suspected, and a test is sought and completed, the whole family (living at the child's address) must self-isolate until a negative result is confirmed.**